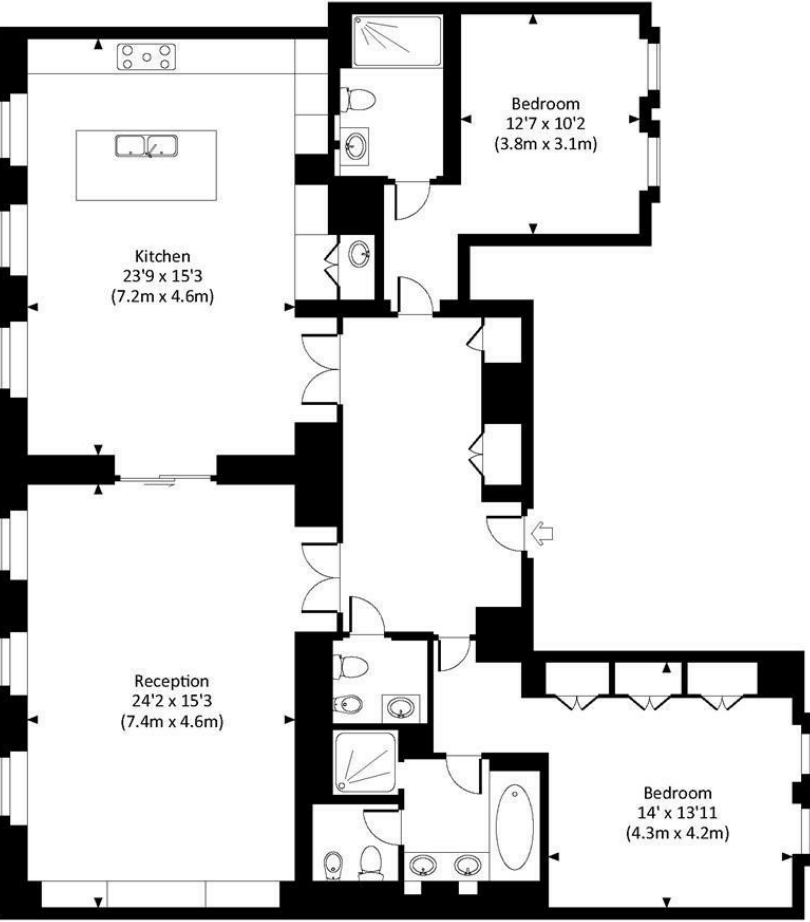


# ONE KENSINGTON GARDENS

LONDON W8

# KENSINGTON GARDENS, W8

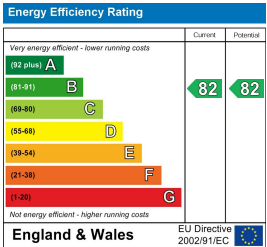
Approx. gross internal area  
1754 Sq.Ft. / 163.0 Sq.M.



This two bedroom apartment is on the second floor of the impressive One Kensington Gardens development facing Hyde Park, finished and stylishly furnished to the highest of standards. With an extremely spacious interconnecting reception room and kitchen / dining room, the apartment is quietly situated on the western side of the development on Victoria Road and benefits from high ceilings and excellent natural light throughout, with wood and stone floors the principal areas and carpets to bedrooms.

One Kensington Gardens offers an impressive array of amenities including 24-hour concierge, a stunning 25-metre pool and fitness centre, with Jacuzzi, steam room and sauna, as well as underground valet parking. It is located directly opposite Kensington Palace Gardens, whilst the excellent shopping amenities and transport links of Kensington High Street (Circle and District Underground lines) are less than five minutes` walk away. The A4 provides easy access to Heathrow Airport and the west.

Furnished  
Viewing strictly by appointment with Mark Tunstall Property



MARK  
TUNSTALL  
PROPERTY

INFO@TUNSTALLPROPERTY.CO.UK  
+44 (0)20 3011 1775

**IMPORTANT NOTICE**  
THIS BROCHURE AND THE DESCRIPTIONS AND MEASUREMENTS HEREIN DO NOT CONSTITUTE REPRESENTATION AND WHILST EVERY EFFORT HAS BEEN MADE TO ENSURE ACCURACY, THIS CANNOT BE GUARANTEED. A COPY OF THE FULL ENERGY PERFORMANCE CERTIFICATE IS AVAILABLE UPON REQUEST.